



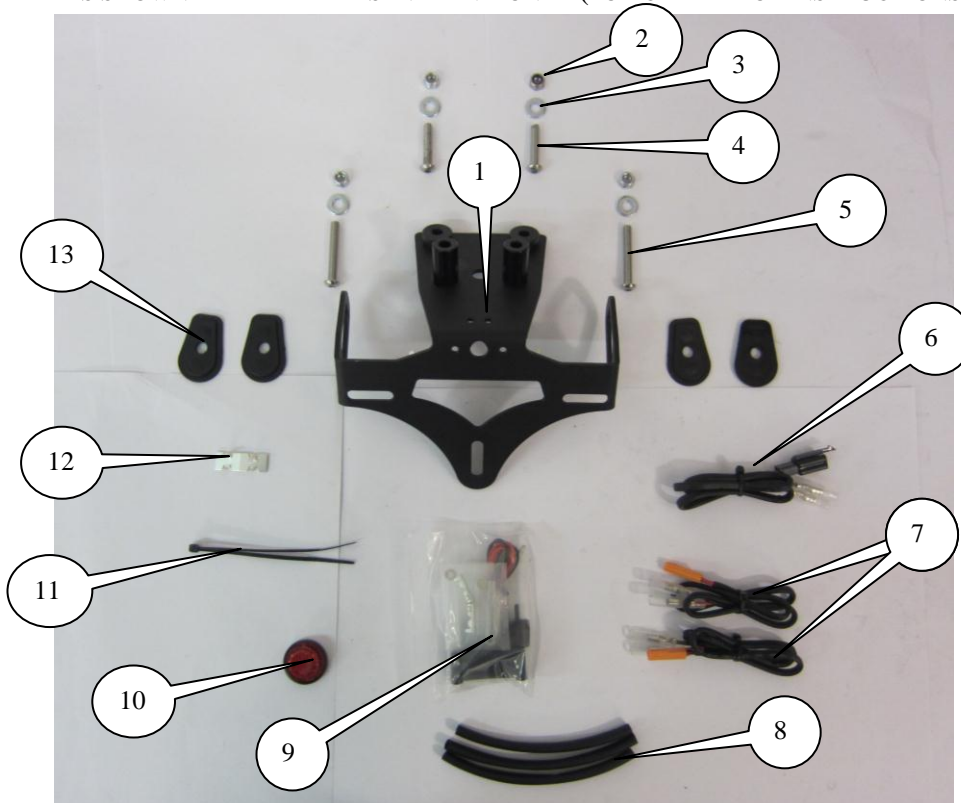
**FITTING INSTRUCTIONS FOR LP0135BK LICENCE PLATE BRACKET
KAWASAKI Z800 2013 (FOR USE WITH STANDARD AND MINI
INDICATORS (8mm))**



**EMS PICTURED AND LABELLED BELOW.
DO NOT PROCEED UNTIL YOU ARE SURE ALL PARTS ARE PRESENT.**

Please note that the way the kit is packed does not necessarily represent the way of mounting to the bike.

THE PARTS SHOWN MAY BE REPRESENTATIVE ONLY (FOR CLARITY OF INSTRUCTIONS ONLY)



K&G Racing



LEGEND

ITEM 1 = LICENCE PLATE BRACKET (TB0135 WITH FOUR SWAGED SPACERS) (x1).

ITEM 2 = M6 NYLOC NUTS (x4).

ITEM 3 = M6 WASHERS (x4).

ITEM 4 = M6 x 30mm LONG BUTTON HEAD BOLT (x2).

ITEM 5 = M6 x 40mm LONG BUTTON HEAD BOLT (x2).

Page | 2

ITEM 6 = CON007 LICENCE PLATE LIGHT CONNECTOR (x1).

ITEM 7 = CON009 R&G MINI INDICATOR CONNECTORS (x2).

ITEM 8 = 200mm LENGTH OF HEATSHRINK (x3)

ITEM 9 = LA0002 LICENCE PLATE ILLUMINATOR ASSEMBLY (x1).

ITEM 10 = REFLECTOR (x1).

ITEM 11 = SMALL CABLE TIES (x2).

ITEM 12 = SELF ADHESIVE CABLE CLIPS (x2).

ITEM 13 = INDICATOR ADAPTORS (I0026) (x4).

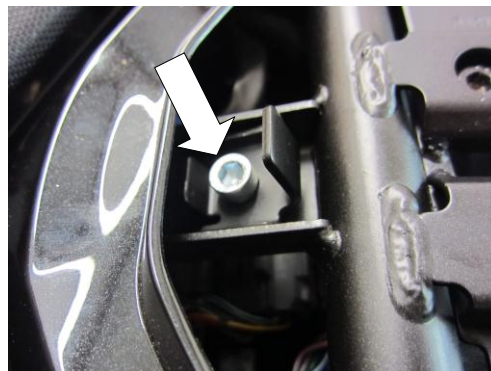
Please note that in cases where kits are packed with rubber washers holding the components onto the bolt – *the rubber washers should be thrown away!*

TOOLS REQUIRED

- Set of metric Allen keys to include 4 & 5mm A/F sizes.
 - Electrical pliers/crimps.
- 8 and 10mm sockets & wrench.
 - Phillips driver.
- Small amount of superglue.



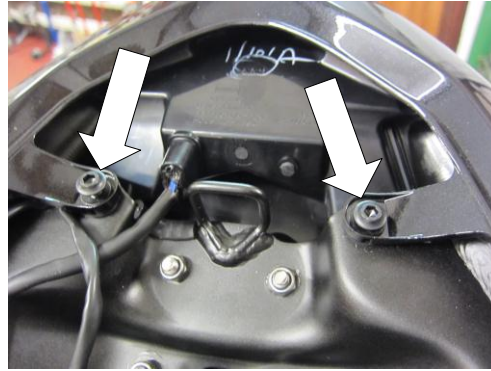
Picture 1



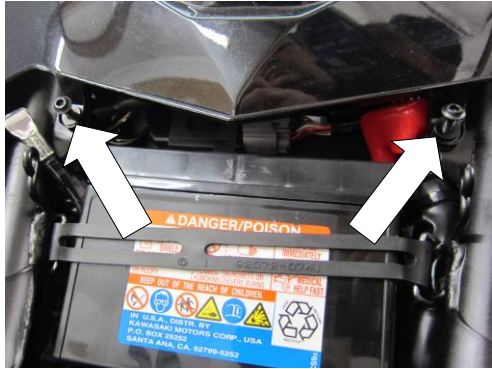
Picture 2



Picture 3



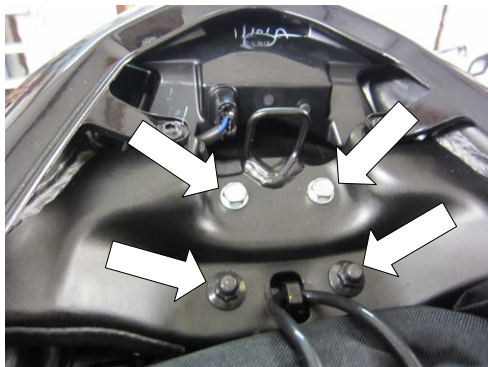
Picture 4



Picture 5



Picture 6



Picture 7



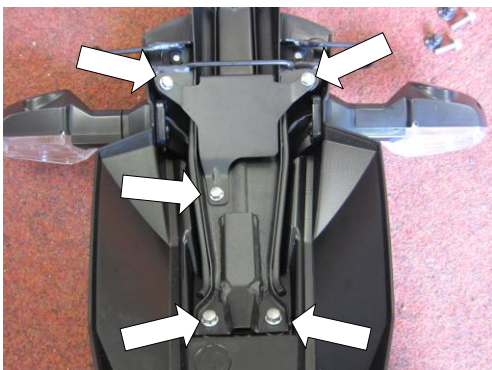
Picture 8



Picture 9



Picture 10



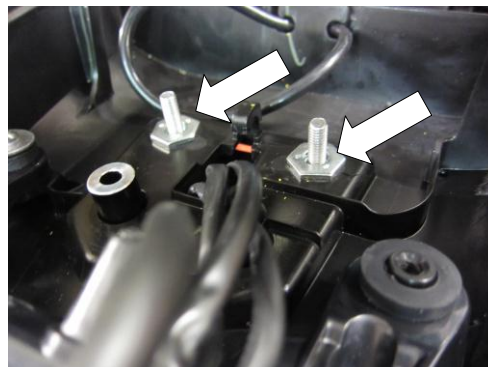
Picture 11



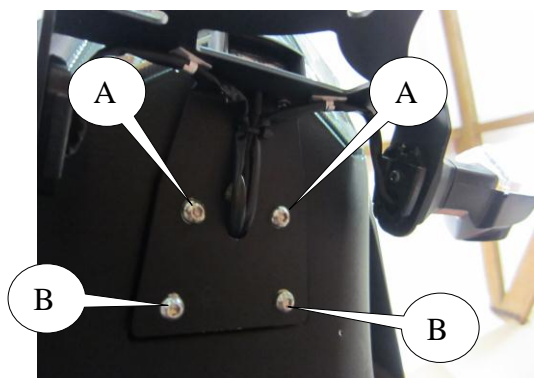
Picture 12



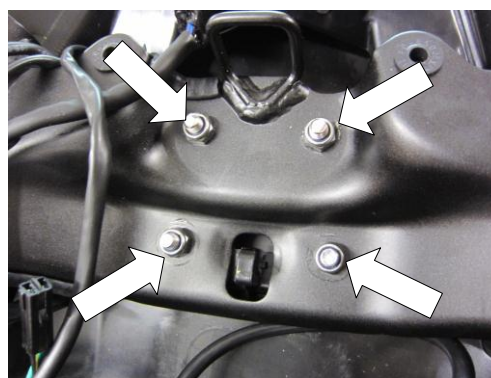
Picture 13



Picture 14



Picture 15



Picture 16

FITTING INSTRUCTIONS

- To fit the R&G tail tidy, first remove the pillion seat using the key.
- Remove the bolt arrowed in picture 2.
- Slide the rider's seat catch out as shown in picture 3 and remove the rider's seat.
- Remove the four bolts arrowed in pictures 4 and 5.
- Remove the tool clamping rubber as shown in picture 6 and gently remove the rear seat cowling.
- Remove the two nuts and two bolts arrowed in picture 7 and gently lower the under-tray unit.
- Lowering the under-tray unit will allow access and removal of the cable cover screw and cover as arrowed in picture 8.
- Remove the plastic cover and disconnect the licence plate light and indicator plug sockets as shown in picture 9.
- Remove the two bolts arrowed in picture 10 from underneath.
- Remove the original licence plate bracket ensuring to prevent the wiring from snagging (please note the routing of the wires for reassembly).
- Fit the R&G license plate illuminator (item 9), as shown in picture 11. Use a small amount of superglue to stick the light shroud in position. Feed the wiring through the central hole in the new licence plate bracket (please use the provided heat shrink to protect the wires).
- If using the original indicators remove the five bolts arrowed in picture 11 and remove the original licence plate support bracket and the cable cover.
- Remove the screw arrowed in picture 12 and remove the original indicators.
- Fit the indicators of choice either the originals or mini's (must have 8mm mounts) to the new licence plate bracket (R&G product code RG370 for bulb type or RG371 LED type) using the supplied adaptors (item 13) also feed the wires through the central hole in the licence plate bracket (please use the provided heat shrink to protect the wires).

R&G Racing

Unit 1, Shelley's Lane, East Worldham, Alton, Hampshire, GU34 3AQ

Tel: +44 (0)1420 89007 Fax: +44 (0)1420 87301 www.rg-racing.com Email: info@rg-racing.com



- Use the small cable ties through the two small holes in the licence plate bracket and the self-adhesive clips to secure the wires into position as shown in picture 15.
- Offer the new licence plate bracket into position on the under-tray and use the two shorter M6 bolts (item 4 also labelled B in picture 15) to secure the licence plate bracket to the under-tray as shown in picture 14.
- Route the wiring as original and refit the cable cover as original.
- Lift the under-tray/licence plate bracket into position so the two bolts fit through the two holes in the cross member as shown in picture 16.
- Use two of the nyloc nuts and washers (items 2 and 3) to secure the under-tray/licence plate bracket into position as shown in picture 16.
- Use the longer M6 bolts (item 5 also labelled A in picture 15) and the nyloc nuts and washers to secure the under-tray/licence plate bracket into position as shown in picture 16.
- Tighten all nuts.
- Reconnect the licence plate illuminator using the connection from the kit (item 6) (*if illumination fails, swap the bullet connections around*).
- If applicable use the two connectors (item 7) from kit to connect the indicators.
- It is a good idea to check all lights at this stage.
- Refit and secure the rear seat cowl as original.
- Refit the rider and pillion seats as original and licence plate (it may require drilling).
- **IMPORTANT: IF FITTING A FULL-SIZE LICENCE PLATE AND PLACING IT FAR DOWN ON THE LICENCE PLATE HANGER, THERE IS A SMALL CHANCE OF THE LICENCE PLATE HITTING THE BACK WHEEL UNDER HEAVY LOAD AND OVER LARGE BUMPS IN THE ROAD. IT IS YOUR RESPONSIBILITY TO CHECK FOR THIS POSSIBILITY AND TAKE AVOIDING ACTION. FAILURE TO CHECK THIS COULD RESULT IN SERIOUS INJURY.**
- Depending on local laws, attach enclosed reflector in an appropriate location.
- Test the license plate illuminator and all lights before riding.

ISSUE 1 18/01/2013 (NSY)

CONSUMER NOTICE

The catalogue description and any exhibition of samples are only broad indications of the Products and R&G may make design changes which do not diminish their performance or visual appeal and supplying them in such state shall conform to the order. The Buyer acknowledges no representation or warranty (other than as to title) has been given or will apply to the Products other than those in R&G's order or confirmation and the Buyer confirms it has chosen the Products as being of merchantable quality and suitable for its particular purposes. Where R&G fits the Products or undertakes other services it shall exercise reasonable skill and care and rectify any fault free of charge unless the workmanship has been disturbed. The Buyer is responsible for ensuring that the warranty on the motorcycle is not affected by the fitting of the Products. On return of any defective Products R&G shall at its option either supply a replacement or refund the purchase money but shall not be liable if the Products have been modified or used or maintained otherwise than in accordance with R&G's or manufacturer's instructions and good engineering practice or if the defect arises from accident or neglect. Other than identified above and subject to R&G not limiting its liability for causing death and personal injury, it shall not be liable for indirect or consequential loss and otherwise its liability shall be limited to the amounts paid by the Buyer for the Products or the fitting or service concerned. These terms do not affect the Buyer's statutory rights.

R&G RACING RETURNS POLICY (NON-FAULTY GOODS)

Returns must be pre-authorized (if not pre-authorized the return will be rejected). Goods may only be returned direct to us if they were purchased direct from us (customer must prove if necessary). Otherwise to be returned to original vendor. Goods must be in re-sellable condition, in the opinion of R&G Racing. All returns are subject to a 25% restocking and handling fee (25% of the gross value exc. P&P – at the prevailing price at time of purchase). The customer must pay any and all carriage charges. No returns of discontinued products, unless within 14 days of purchase. This policy does not affect your statutory rights and does not refer to faulty goods.

R&G Racing

Unit 1, Shelley's Lane, East Worldham, Alton, Hampshire, GU34 3AQ

Tel: +44 (0)1420 89007 Fax: +44 (0)1420 87301 www.rg-racing.com Email: info@rg-racing.com